

Jack's Multiple Personality in Marrowbone Film

Wilma Prafitri^{1*}, Famala Eka Sanhadi Rahayu², Ary Ivanka³

^{1,2,3}Mulawarman University

Article history:

Received
28 June 2024

Revised
7 August 2024

Accepted
12 August 2024

Available online
15 August 2024

This paper is licensed
under Creative Commons
Attribution 4.0
International License



Abstract: This study examined the manifestation of Jack's multiple personality in the film Marrowbone. The film "Marrowbone," directed by Sergio G. Sanchez, serves as the primary source for this theory. The narrative revolves around a nuclear family including four siblings: Jack Marrowbone, the eldest, followed by Jane Marrowbone, Billy Marrowbone, and Sam Marrowbone. Due to enduring psychological distress caused by their biological father, they are compelled to return to their mother's ancestral residence. The trauma induced depression in Jack and triggered the manifestation of his multiple personality. The objective of this thesis is to examine the primary factors contributing to Jack's manifestation of multiple personality disorder. The data for this thesis was gathered by qualitative methods, namely by analyzing screenplays, dialogue, and scenes from films. The researcher analyzed the data using Haddock as theoretical framework. The findings indicate that Jack possesses three additional personalities, which correspond to those of his deceased younger siblings. The findings of this research indicate that negative previous experiences can have a detrimental impact on an individual's psychological well-being. By analyzing the personality, background, and history of individuals who suffer from this disorder, the audience can gain insight into the factors contributing to its manifestation.

Keywords: marrowbone, multiple personality, psychoanalysis, traumatized

INTRODUCTION

Literature is a broad term that encompasses written or spoken works that express ideas, emotions, and stories through language. It is a form of art that uses words to create a meaningful and aesthetic experience for the reader or audience. Literature includes various genres and forms, such as novels, short stories, poetry, plays, essays, and more. Boggs and Petrie (2008) assert that comprehending film as an artistic medium necessitates a meticulous analysis of its diverse components, such as narrative structure, cinematography, and editing. Furthermore, Buckland (2015) offers an extensive examination of film studies, covering fundamental ideas such as genre, narrative, and film theory, so catering to the needs of both novices and expert learners.

According to Dobie, Freud found a way for an analyst to help the patient reveal traumatic or threatening events that had been suppressed in the subconscious and thus made them undetectable to the conscious mind using free association, language slips, and dreams.

*Corresponding author: wilma.prafitri@fib.unmul.ac.id

To cite this article: Prafitri, W., Rahayu, F.E.S., & Ivanka, A. (2024). Jack's Multiple Personality in Marrowbone Film. *Ebony --- Journal of English Language Teaching, Linguistics, and Literature*, 4(2), 166–175.

The same subjects and approaches are used to analyze literary texts in psychoanalytic criticism (Dobie, 2012; Freud, 2015). Psychoanalysis is about the idea of unconsciousness which can be defined as a storehouse of traumatic memory, anger, wound, terror, culpable urge and unresolved struggle that we don't want to learn about (Althaf, 2022). Artistic work is the result of the mind of the author, whether consciously or unconsciously. With psychoanalysis theory the researcher can analyze the behavior of characters in text or visually.

Coleman (1976) offers an in-depth analysis of various psychological disorders, emphasizing the influence of societal changes on the prevalence and understanding of abnormal behavior. Multiple personality disorder (MPD) is recognized as one of the most commonly discussed and reported conditions and is the subject of considerable speculation and criticism. Characteristically the diagnosis of multiple personality is made after years of contact through the mental health system (Lichtenberg, 1992). The central characteristics of the condition are the presence within an entity of two or more distinct identities, each influential at a given period and capable of deciding the actions of the entity. The relationship between psychoanalysis and multiple personality disorders is that both theories analyze the personality disorders that exist in a person. This multiple personality disorder can be found in several literary works in written or visual form. This research took some previous studies. One of them is from Lathifah (2008) who examined the portrayal of multiple personality disorder in Daniel Keyes' *the Minds of Billy Milligan*, focusing on how the main character's fragmented identities are depicted throughout the novel." Based on these considerations, the researchers aim to examine the primary factors contributing to Jack's manifestation of multiple personality disorder. This research is expected to fill the gap by combining insights from psychology, film studies, and cultural studies. Hopefully, by analyzing "Marrowbone" could uncover gaps in interdisciplinary approaches to understanding multiple personality disorder in movie.

In literature, character is one important element in literary work. Characters can describe the personality of people in a story that can be seen from the dialogue and behavior. According to Abrams "Characters are the persons represented in a dramatic or narrative work, who are interpreted by the reader as possessing particular moral, intellectual, and emotional qualities by inferences from what the persons say and their distinctive ways of saying it the dialogue and from what they do the action" (Abrams, 2014). With this understanding, the importance of character in the work can give the audience a description of a characterization.

With the development of psychology towards the end of the nineteenth century, many critics were tempted to apply psychological theories to literary analysis. The psychoanalytic approach has developed along with structuralism and linguistic and post structuralist philosophy; these approaches rarely focus on the form of text. Also, psychoanalysis itself is a form of therapy which aims to cure mental disorders by investigating the interaction of consciousness and unconsciousness in the mind (Barry, 1995). Bradford (2020) delineates the noteworthy achievements of Sigmund Freud to the realm of psychology, encompassing the establishment of psychoanalysis and his postulations regarding the unconscious mind. In addition, Hall (1997) provided a comprehensive analysis of several personality theories,

specifically discussing the significant contributions made by important theorists and the consequences of these ideas for comprehending human behavior. Middleton and Butler (1998) also provided a detailed analysis of dissociative identity disorder within an Australian context, highlighting the clinical features and therapeutic challenges associated with the condition.

Literary works are the author's creations that can be inspired by their surroundings or even themselves. "A work of literature primarily as an expression, in an indirect and fictional form, of the state of mind and the structure of personality of the individual author" (Abrams, 2014). Literary works can also be considered a reflection of life. The author uses literary works to tell what they are feeling about and what they see in social life that involves human activity. "Literary works are known by people in the written form, those are novel, poetry, and also play" (Sangidu, 2004).

Multiple personality disorder or dissociative identity disorder is a consequence of extreme trauma that usually happens in early childhood. It is thought that the formation of separate identities is a coping strategy used in reaction to intense and frequently recurrent traumatic events, including abuse or neglect. These personas might take shape as a means for the person to separate their experiences and shield themselves from emotional distress. (Haddock, 2001). A person who has multiple personalities may experience amnesia, gaps in memory for personal information, or traumatic experience.

Multiple personality is a mental health problem in which an individual has two or more different identities or personality states. These identities may have unique perspectives and interactions with the world. There are just as many reasons for the person with multiple personality to begin treatment, and there are indicators that dissociation may be an issue. If a client has seen several different therapists yet does not report much progress, screening for dissociation may be indicated (Haddock, 2001).

Amnesia is a profound memory loss which is usually caused either by physical injury to the brain or by the ingestion of a toxic substance which affects the brain. In addition, memory loss can be caused by a traumatic, emotional event, shock, illness or sometimes induced by anesthesia. Some amnesias are severe and irreversible and some are mild and can be reversible. The severity of the amnesia depends on how and which part of the brain is affected and damaged. It can affect anyone, male or female. It can occur at any age (Kumar, 2013).

Hallucination refers to perceiving something that is not present in the external environment. These experiences can involve seeing, hearing, or feeling sensations that are not real. There are several hallucinations that commonly occur in people with psychological disorders.

A traumatic event includes a one-time experience or an ongoing or a recurring event or events completely beyond the individual's ability to deal with or integrate the ideas and feelings associated with that experience. Trauma events can be caused by many different reasons, but few of them have some common aspect. Usually there is a feeling of helplessness, if there is a real or subjective danger that threatens the life, physical integrity or sanity of oneself or loved ones (Haddock, 2001).



Conflicts in literary work are not just triggered between one person and another. The cause of conflict can also come from a single person and the source of this conflict is psychological. The psychological conflict exists when a person is under a pressure or a frustration that happens in that person's life. This psychological conflict can be divided into two, external conflict and internal conflict.

Depression is a mental health disorder characterized by persistent feelings of sadness, hopelessness, and a lack of interest or pleasure in daily activities. It is a common condition that can affect a person's thoughts, feelings, behavior, and overall, well-being. Depression can vary in severity, and its symptoms may interfere with a person's ability to function at work, school, or in a relationship (Haddock, 2001).

METHOD

This research used qualitative methods to collect data and psychoanalysis to analyze literature. Flick suggests collecting non-standardized data and examining texts and images rather than figures and statistics to study the subjective meaning or social production of topics, events, or practices (Althaf, 2022; Flick, 2009).

This study used data from Sergio G. Sanchez's 2017 psychological horror mystery play *Marrowbone*. The film stars George MacKay (Jack), Anya Taylor-Joy (Allie), Charlie Heaton (Billy), Mia Goth (Jane), and Matthew Stagg (Sam). *Marrowbone* Was shown in Special Presentations at the 2017 Toronto International Film Festival and released in Spain by Universal Pictures on October 27, 2017. This film examines many personas through discourse, character action, and screen images.

Data collection required numerous procedures. First, the researchers watched the major characters' psychological discourse and conduct in *Marrowbone* film. Second, the researchers identified the primary character from other personalities in the data. Finally, the researchers chose data from *Marrowbone* films' main characters with psychiatric issues and many personalities.

Data analysis involves three processes after data collection. First, the researchers gathered and organized info on *Marrowbone*'s primary characters' psychological issues. Second, the researchers found many personality features and causes of personality disorders in the main character. Finally, the researchers drew conclusions and verified the solution of the problem.

RESULTS

This section presented the finding and discussion that have been analyzed by the researcher. The researchers found some evidence in the film about how Jack's character's personality is depicted in the film.

1. Amnesia

The first depiction that Jack has a multiple personality is when he has the same wound as his younger brother Billy, although in the film there is no explanation as to why Jack has that wound and Jack does not remember anything about his wound. Billy wanted to take their blood money that Jack had thrown into the chimney of their house to pay for the transfer

of the house to Jack's name. Because they don't have money anymore, money is their only hope. Billy entered the chimney that connected to their attic. When Billy went down and wanted to get the money box, he saw the figure of someone in the attic. Due to panic, Billy finally rushed up and injured himself. The scene changes to Jack who is lying in his room with an injured part of his stomach. He heard Billy's voice in pain in the bathroom, whose wound was being treated by Jane. But the wound was in the same position as Jack's wound. This is one piece of evidence that it was Jack who went into the chimney whose consciousness was taken by Billy and when he woke up, he didn't remember anything.



Figure 1. Jane is treating Billy who is injured on his left side 01:11:59 (Marrowbone.)

2. Switching

Jack's Multiple personality begins to become clearer towards the end of the film. When Allie found out everything, she finally decided to go to Jack to check on him. When Allie arrived and went upstairs, Allie heard the conversation between Billy, Jane and Sam from inside the blanket fort they had made. Allie kept peeking under the blanket and she saw Jack talking to himself in a different voice. When Allie called him, Jack answered in a different tone of voice.



Figure 2. Allie who was looking at Jack was talking to himself 01:31:47 (Marrowbone.)

From the image above, Jack no longer lives with his siblings and throughout the film he only talks to himself without realizing it and all of Jack's interactions with his siblings are only in Jack's own mind. Jack's multiple personality emerged because of the bad experiences he had in the past. These events traumatized Jack and destroyed his mind.

3. Hallucination

After Jack wants to kill himself, he cancels his intention after he sees his younger siblings who are still alive and sleeping in the fort they once made. Because he couldn't stand the experience he felt, that was what made him think that his younger siblings were still alive and then became his other personality.

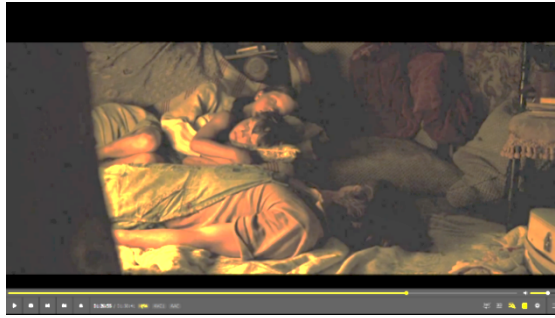


Figure 3. Jack hallucinates seeing his siblings asleep 01:27:05 (Marrowbone.)

4. Trauma

Psychological trauma is a type of damage to the psyche that occurs as a result of a traumatic event. A traumatic event involves a single experience, or an enduring or repeating event, which completely overwhelms the individual's ability to cope or integrate the ideas and emotions involved with the experience. The sense of being overwhelmed can be delayed by weeks or years, as the person struggles to cope with the immediate danger.



Figure 4. Tom Porter finds the decomposed bodies of Jack's younger siblings in the attic 01:24:46 (Marrowbone.)

5. External Conflict

External conflict in relation to a psychological issue, we're talking about conflicts or difficulties that result from the interplay between an individual's internal struggles like mental health problems or emotional upheaval and external variables in their relationships or surroundings. It is simply a conflict between the person's own reality and the outside world. This type of conflict offers a tangible narrative framework for exploring the character's inner journey, externalizing and dramatizing psychological difficulties in the process.

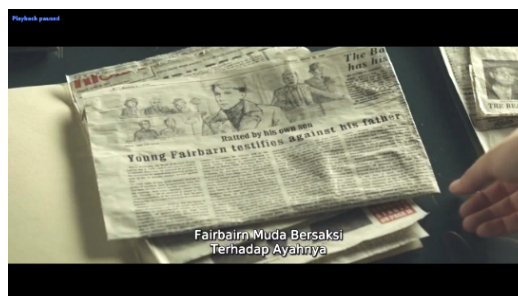


Figure 5. Old newspapers about how Jack had to witness his father's cruelty 00:59:27 (marrowbone.)

6. Internal Conflict

In the context of a psychological issue, internal conflict refers to the struggles, or emotional upheaval that an individual goes through when they attempt to make sense of their own ideas, feelings, wants, or beliefs. Internal conflict mostly arises within a person's own thoughts or emotions. Due to their psychological illness, the person experiences significant emotional anguish, perplexity, or conflicting emotions. They may question their own worth, abilities, or decisions, leading to feelings of inadequacy or self-loathing. The person may grapple with questions of who they are, their place in the world, or their sense of self, especially if their psychological problem impacts their self-perception or identity.



Figure 6. Jack locked his siblings away to take care of their father alone 01:18:27 (Marrowbone.)

7. Depression

The meaning of depression is commonly used to describe a temporary decreased mood when a person feels down, clinical depression is a serious illness that involves the body, mood, and thoughts that cannot simply be willed or wished away. It is often a disabling disease that can affect a person's daily life. After the conflict with his father, Jack rushed to return home to chase his father. But when he got home, Jack couldn't find his father anymore and his younger siblings had been killed by his father. Because he failed to protect his younger siblings, depression began to damage Jack's mind. Not accepting what had happened, Jack's depression began to get worse and he even thought about committing suicide. This depression is also one of the triggers for the emergence of a multiple personality in Jack. This bad experience made Jack hallucinate thinking that his younger siblings were still alive.

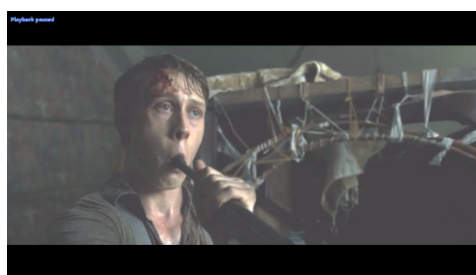


Figure 7. Jack is depressed and wants to end his life 01:26:09 (Marrowbone.)

DISCUSSION

The discussion based on the findings of the study. The researcher discusses the depiction of Jack's multiple personality as seen in the film and the causes of the emergence of his multiple personality. From the data that has been analyzed, there are four scenes that depict Jack's dual personality and four things that cause Jack's dual personality to emerge.

Jack's similar wound to that of his younger brother Billy and do not remember anything is another proof that he had multiple personality traits, although in the movie, Jack's wound is left unexplained. Another proof Jack had multiple personalities became obvious at the end of the film. Allie saw Jack talking to himself in a different tone imitating the voices of Jack's younger siblings. Allie called Jack but Jack answered in another tone telling her that Jack was asleep. According to the dialogue they have, Jack no longer lives with his siblings, and throughout the film, he only talks to himself without realizing it, and all of Jack's interactions with his siblings take place solely in his mind. Jack's multiple personality developed as a result of his previous bad experiences. These experiences shocked and damaged Jack's mentality. Jack considered taking his own life because of all the terrible things that had happened to him in the past, which had left him extremely miserable. But Jack stopped himself after he saw his younger siblings lying in the blanket fort. But because Jack was psychologically traumatized by all of these experiences, everything he saw was only a hallucination produced by his brain. These findings in line with the statement of Aras (2015) who explored the detailed correlation between literature and psychology, highlighting how literary works frequently mirror intricate human behaviors and psychological events.

Several causes led to the emergence of Jack's other personas before his other personality showed up. Because of his painful past experiences, Jack believed his younger siblings were still living. One kind of psychological harm brought on by a traumatic experience is psychological trauma. A traumatic incident is any one-time or persistent event that totally overwhelms the victim's capacity for adjustment or integration of the concepts and feelings associated with the experience. The trait was discovered when Allie accidentally finds old news about the Marrowbone family. It turned out that Jack's father had a history of torturing both Jack and his younger siblings. This finding was supported by the theory of Bracher (1993) who examined the application of Lacanian psychoanalysis to cultural criticism, specifically in the context of comprehending how discourse influences societal institutions and individual identities.

CONCLUSION

Upon conducting an analysis of the portrayal of Jack's various personas in the film. The researcher conducted data analysis using characterization elements, which are outlined as follows.

Characterization refers to the various methods used to develop a character in a story. These methods include describing their physical appearance, their dialogue, their external actions, their internal thoughts and emotions, how other characters react to them, and the use of dramatic foils to highlight their contrasting traits. The examination of Jack, the primary character, encompasses his habits, attitude, lifestyle, looks, difficulties, physical attributes, and worldview. Jack's manifestation of multiple personalities is attributed to the presence of trauma and conflict. Jack's personality is profoundly impacted by the trauma resulting from the war, leading to a range of psychological ramifications. When Jack experiences the emergence of an alternate personality, the remaining three personalities assume control, resulting in a state of amnesia when Jack is unable to recall any information. The turmoil Jack experiences triggers the emergence of his personality, and to make matters worse, three

distinct personalities develop within Jack, resembling his younger brothers. This study supported and strengthened Hill and Church Gibson's statement which examined the convergence of cinema and psychoanalysis, scrutinizing the capacity of films to mirror and influence psychological motifs and latent desires.

The researchers anticipate that students will enhance their ability to understand the significance or goals that may arise in the educational experience on campus by examining literary works, specifically focusing on the components of literary and psychological works. In order to foster the study of English literature and psychology, it is imperative for the campus library to provide a diverse range of literary and psychological works, with a special emphasis on psychology and storytelling. The designated literary works will facilitate students' learning and offer a plethora of information on literary subjects.

REFERENCES

- Abrams, M. H., & Harpham, G. G. (2015). *A glossary of literary terms* (11th ed.). Cengage Learning.
- Althaf, K. M., & Nur, R. H. (2022). Psychological conflict on the main characters in Netflix original movie "All the Bright Place" by Brett Haley. *ELITERATE: Journal of English Linguistics and Literature Studies*, 2(3), 95-106.
- Aras, G. (2015). Personality and individual differences: Literature in psychology-psychology in literature. *Procedia-Social and Behavioral Sciences*, 185, 250-257.
- Barry, P. (1995). *Beginning theory: An introduction to literary and cultural theory*. Manchester University Press.
- Bradford, A. (2020). Sigmund Freud: Life, work & theories. *Live Science*. <https://www.livescience.com/54723-sigmund-freud-biography.html>
- Boggs, J. M., & Petrie, D. W. (2008). *The art of watching films* (7th ed.). McGraw-Hill.
- Bracher, M. (1993). *Lacan, discourse, and social change: A psychoanalytic cultural criticism*. Cornell University Press.
- Buckland, W. (2015). *Film studies: An introduction*. Oxford Brookes University.
- Coleman, J. C. (1976). *Abnormal psychology and modern life*. University of California.
- Dobie, A. B. (2012). *Theory into practice: An introduction to literary criticism*. Wadsworth Cengage Learning.
- Flick, U. (2009). *An introduction to qualitative research* (4th ed.). Sage.
- Freud, S. (2015). *A general introduction to psychoanalysis*. Dodo Collection.
- Haddock, D. B. (2001). *The dissociative identity disorder sourcebook*. McGraw Hill.
- Hall, C. (1997). *Theories of personality*. John Wiley & Sons.
- Hill, J., & Church Gibson, P. (1998). *Movie and psychoanalysis*. Oxford University Press.
- Kumar, D. R. (2013). *A review on amnesia*. International Journal of Allied Medical Sciences and Clinical Research.
- Lathifah, F. (2008). *The main character's multiple personality in Daniel Keyes' the Minds of Billy Milligan* [Undergraduate thesis, The State Islamic University of Malang].

Lichtenberg, J. (1992). Perspectives on multiple personality disorder. *Psychoanalytic Inquiry*, 12(1), 1-49.

Marrowbone: Synopsis. (2024). IMDb.

<https://www.imdb.com/title/tt5886440/plotsummary>

Middleton, W., & Butler, J. (1998). Dissociative identity disorder: An Australian series. *Australian & New Zealand Journal of Psychiatry*, 32(6), 794-804.

Sangidu. (2004). *Metode penelitian sastra, pendekatan teori, metode dan kiat*. UGM.

